

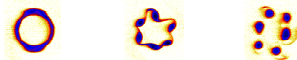


1999 Workshop on Nonneutral Plasmas

**August 2-5, 1999
Princeton, New Jersey**

Final Announcement

<http://www.pppl.gov/Workshops/NNP/>



The 1999 Workshop on Nonneutral Plasmas will be held on the Princeton University campus from August 2-5, 1999. This workshop will be hosted by the Princeton Plasma Physics Laboratory, and sponsored by the U.S. Office of Naval Research, the U.S. Department of Energy, and Princeton University. The Workshop will consist of plenary sessions (for about two-thirds of the day), held in Jadwin Hall, on the main campus of Princeton University, followed by poster sessions in the late afternoons. There will be a preconference reception beginning at 6:00 p.m. on Sunday, August 1, 1999. The conference banquet will be held on Tuesday evening, August 3.

Inquiries and late registration should be sent to:

**Ms. Terry Greenberg
Princeton Plasma Physics Laboratory
P.O. Box 451, MS-17, Princeton, NJ 08543 USA
Phone: 609-243-3347; Fax: 609-243-2418
E-mail: tgreenberg@pppl.gov**

Program

Enclosed is the schedule for the workshop and a list of invited and contributed papers. Appearance on the list serves as notification that papers have been accepted. *No other confirmation will be provided.* The 1999 Nonneutral Workshop follows the format of previous workshops and consists of morning and afternoon oral sessions followed by afternoon poster sessions. The space available for each poster will be 4' x 8' (1.2 m x 2.4 m).

Registration and the Preconference Reception will be held from 6:00-8:00 p.m. on Sunday, August 1, in the Brush Gallery in the lower level of McDonnell Hall, which adjoins Jadwin Hall on the Princeton University campus. Referring to the enclosed campus map, the recommended access to McDonnell Hall, and to Jadwin Hall where the oral presentations will be given, is through the Washington Road street-side entrance to the lower level of McDonnell Hall.

Oral presentations will begin at 8:30 a.m. on Monday, August 2, in Room A-10 of Jadwin Hall, which adjoins McDonnell Hall. The afternoon poster sessions will begin at 3:10 p.m. in the nearby lower level of McDonnell Hall.

A map of the Princeton University campus is enclosed. Jadwin Hall and McDonnell Hall are located on Washington Road, near to Palmer Stadium.

Attendees are strongly encouraged to stay at the Nassau Inn, or at the University dormitories, which are short walking distances from the McDonnell-Jadwin complex. Free parking is available in Lot 21, a short walking distance from the McDonnell-Jadwin complex. Free parking is also available in Lot 23 at the south end of the campus. There is public parking at the Palmer Square Garage (609-924-9315) for \$14 a day (up to 24 hours) on Chambers Street just north of the campus. Guests at the Nassau Inn may park their cars there for \$12 a day. There is also some metered street parking (free on Sundays) on William Street and Prospect Avenue.

Workshop Registration

The Registration Fee is \$150.00 (after May 14, 1999), that includes participation in all sessions, a copy of the abstracts, which will be distributed at the conference, and a printed volume of the AIP Conference Proceedings. Checks (in U.S. dollars) payable to "1999 Nonneutral Workshop" should be sent with the completed registration form to *1999 Workshop on Nonneutral Plasmas*, c/o Terry Greenberg, Princeton Plasma Physics Laboratory, P.O. Box 451, MS-17, Princeton, New Jersey 08543. Federal Express address is Princeton Plasma Physics Laboratory, MS-17, Forrestal Campus, Route 1 North at Sayre Drive, Princeton, New Jersey 08543

The Student Registration fee is \$25.00, which includes participation in all sessions, a copy of the abstracts, which will be distributed at the conference, and a printed volume of the AIP Conference Proceedings. Checks (in U.S. dollars) payable to "1999 Nonneutral Workshop" should be sent with the completed registration form to *1999 Workshop on Nonneutral Plasmas*, c/o Ms. Terry Greenberg, Princeton Plasma Physics Laboratory, P.O. Box 451, MS-17, Princeton, New Jersey 08543. Federal Express address is Princeton Plasma Physics Laboratory, MS-17, Forrestal Campus, Route 1 North at Sayre Drive, Princeton, New Jersey 08543.

Some funds have been allocated to help defray travel costs and the conference registration fee for students who are presenting a paper. Students wishing to request financial assistance should include a letter to the Conference Secretary to this effect with the submission of their abstract.

Banquet

On Tuesday evening, August 3, there will be a banquet dinner at the Nassau Inn. The cost for the banquet is \$50.00 for workshop registrants. Guest tickets may also be purchased for \$50.00. The Princeton University Art Museum will be open that evening for banquet

attendees. Banquet tickets must be purchased by Monday noon, August 2, to ensure a reservation. *Please indicate any special dietary needs when you make your purchase.*

Workshop Proceedings

The workshop proceedings will be published in the American Institute of Physics Conference Proceedings series. Authors wishing to have their paper published in the Conference Proceedings are required to provide a camera-ready manuscript no later than September 1, 1999. John Bollinger, Ross Spencer, and Ron Davidson are Editors for the Conference Proceedings, and authors are encouraged to bring their completed manuscripts to the workshop if at all possible.

The page limit for papers corresponding to oral presentations is 10 pages, and for poster presentations is 6 pages.

Detailed instructions for manuscript presentation are enclosed with this announcement and are also available at www.aip.org/catalog/publish.html.

Manuscripts should be mailed to:

Dr. John Bollinger
National Institute of Standards and Technology
MS 847.10
325 Broadway
Boulder, CO 80303

Manuscripts should not be sent electronically.

Tour of the Princeton Plasma Physics Laboratory (PPPL)

A tour of PPPL is scheduled from 5:30 p.m. - 7:00 p.m. on Wednesday, August 4, and will include tours of the newly-constructed National Spherical Torus Experiment (NSTX), and small-scale experimental facilities such as the Magnetic Reconnection Experiment (MRX) and the Electron Diffusion Gauge (EDG) experiment. Interested participants should sign up at the registration desk by 5:00 p.m. on Tuesday, August 3. Tour transportation will depart from the Jadwin-McDonnell Hall complex at 5:15 p.m. on Wednesday, August 4. PPPL is located on the Forrestal Campus of Princeton University, about four miles from the main campus.

Foreign nationals should provide the information below when they sign up.

If not U.S. Citizen, please provide the following information for the tour of PPPL:

Country of Citizenship:

Passport Number:

Passport Expiration Date:

Date of Birth:

Place of Birth:

Accommodations

A block of rooms has been set aside at the Nassau Inn in Princeton at the rate of \$120 (single or double) plus 6% tax. Reservations must be made by June 18, 1999 and will be accepted via fax to 1-609-921-2684 or by individual call-in to 1-800-862-7728. Reservations must be guaranteed by individual credit cards. The rates listed pertain to arrival on Sunday, August 1, 1999. A Hotel Reservation Form is enclosed with this mailing. The Nassau Inn is within easy walking distance of Jadwin Hall and McDonnell Hall.

A limited number of dormitory rooms have also been set aside on the Princeton University campus. A Dormitory Reservation Form is enclosed with this mailing.

Other Hotels are listed on the Princeton University website at the location <http://www.princeton.edu/Siteware/towncomm.shtml>. When making reservations, ask if the hotel provides shuttle service to the Princeton University campus if you need it. Also be sure to request the Princeton Plasma Physics Laboratory (PPPL) room rate. *Please make your reservations as early as possible, since this is a busy time for summer visitors to the Princeton area.*

Transportation

Princeton University, chartered in 1746 as the College of New Jersey, was British North America's fourth College. The Main Campus covers 600 acres, with Colonial and Gothic halls adjoining modern structures by such eminent architects as I.M. Pei and Robert Venturi. In addition to buildings of historical and architectural interest, the University has an Art Museum and a Museum of Natural History. Recreational facilities available to conference attendees include gymnasiums, tennis courts, swimming pools, and a golf course for a \$5 fee.

Both New York City and Philadelphia are about 50 miles away from Princeton and are readily accessible by either bus or train. Please consult the Princeton University website at the location <http://www.princeton.edu/Siteware/CampusLife.shtml> then click on the menu under "About Princeton" for more travel information.

Princeton Airporter: This limousine service has an information counter at the baggage claim area in each terminal at Newark Airport and at JFK Airport. It services most hotels in the Princeton area. Reservations can be made at the desk when you arrive at the airport for your trip to Princeton. However, reservations must be made in advance for your return trip to the airport. The one-way cost from Newark is \$21.00 per person and \$34.00 from JFK. The trip from Newark takes approximately 90 minutes, and 2.5 hours from JFK. The shuttle service runs every hour, at fifteen minutes past the hour, from 7:15 a.m. to 10:15 p.m. Sunday - Friday. A reduced schedule is in effect on Saturday. One should contact the Princeton Airporter for specifics and reservations at 609-587-6600 or 800-385-4000 and their website <http://www.goairporter.com>.

Driving from Newark Airport: Take the New Jersey Turnpike South to Exit 9. Take Exit 9 to Route 18 North to Route 1 South (Trenton). Continue on Route 1 South approximately 19 miles to Washington Road (Route 571). Make a right turn and go west for approximately 1.5 miles to the Princeton University campus. To continue to the Nassau Inn, turn left onto Nassau Street and then right onto Palmer Square.

From Philadelphia Airport: Take I-95 North to New Jersey Exit 67 (Route 1). Take Route 1 North to Washington Road (Route 571). Make a left turn on the traffic circle and go west for approximately 1.5 miles to the Princeton University campus. To continue to the Nassau Inn, turn left onto Nassau Street and then right onto Palmer Square.

For further information, contact:

Conference Secretary

Terry Greenberg
Princeton Plasma Physics Laboratory
P.O. Box 451, MS-17,
Princeton, NJ 08543 USA
Phone: 609-243-3347
Fax: 609-243-2418
E-mail: tgreenberg@pppl.gov

Technical Questions

Ronald C. Davidson
Princeton Plasma Physics Laboratory
P.O. Box 451, MS-17,
Princeton, NJ 08543 USA
Phone: 609-243-3552
Fax: 609-243-2418
E-mail: rdavidson@pppl.gov

Conference Coordinator

Dolores Lawson
Princeton Plasma Physics Laboratory
P.O. Box 451, MS-37,
Princeton, NJ 08543 USA
Phone: 609-243-3554
Fax: 609-243-2749
E-mail: dlawson@pppl.gov

Organizing Committee

Questions regarding this workshop should be directed to any of the members of the Organizing Committee listed below

Ronald Davidson, Chair
Princeton Plasma Physics Laboratory
rdavidson@pppl.gov

John Goree
University of Iowa
john-goree@uiowa.edu

John Bollinger, Vice Chair
National Institute of Standards and
Technology
john.bollinger@nist.gov

Alan Marshall
National High Magnetic Field Laboratory,
Florida
marshall@magnet.fsu.edu

Gerald Gabrielse, Vice Chair
Harvard University
gabrielse@physics.harvard.edu

Tom O'Neil
University of California, San Diego
toneil@ucsd.edu

Dan Barnes
Los Alamos National Laboratory
dbarnes@lanl.gov

Charles Roberson
Office of Naval Research, VA
robersec@onr.navy.mil

Pat Colestock
Fermilab
colestock@cns55.fnal.gov

Scott Robertson
Colorado University, Boulder
robertso@plasma.colorado.edu

William Dove
U.S. Department of Energy
William.Dove@science.doe.gov

John Schiffer
Argonne National Laboratory
schiffer@anl.gov

Fred Driscoll
University of California, San Diego
fdriscoll@ucsd.edu

Ross Spencer
Brigham Young University
spencerr@maxwell.byu.edu

Joel Fajans
University of California, Berkeley
joel@physics.berkeley.edu

Cliff Surko
University of California, San Diego
csurko@ucsd.edu

